

## User-friendly and Modern Design



12 inch rotatable LED monitor (0~30°) with different viewing angles

Vehicle Power Charger

One key to quickly save

Anti-water keyboard Cover

DICOM 3.0 (option), USB

**ECO1**  
Premium Design, Surprising Price

The image shows a close-up of the ultrasound machine's control panel and monitor. A stethoscope is placed over a medical chart in the background. The chart contains text such as 'Abnormal', 'Flag Ref', and various numerical values. The machine's interface includes a large monitor, a control panel with numerous buttons, and a keyboard. Callouts with green dots point to specific features: the monitor's rotation, a power charger, a 'save' key, an anti-water keyboard cover, and connectivity ports (DICOM 3.0 and USB).



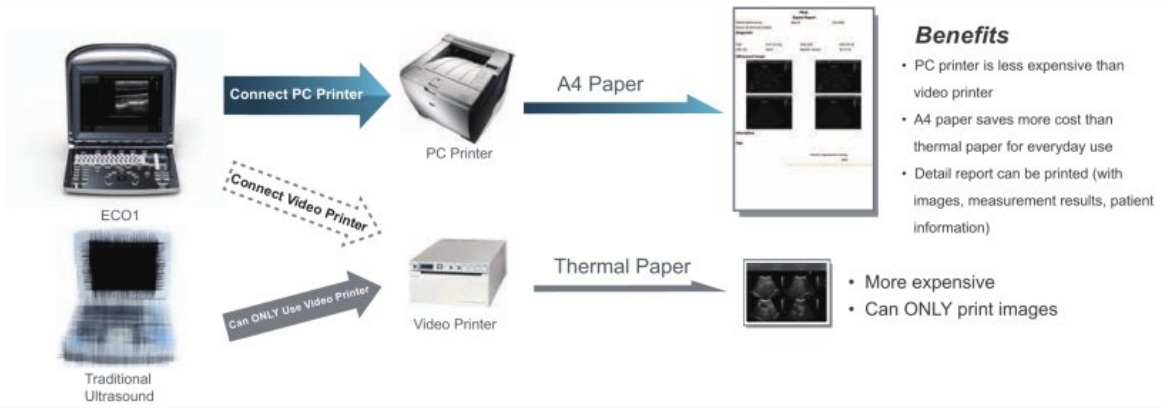
Ultra-compact

Clips for quickly recall (CINE, Still images)

Carrying case (BG-100); go anywhere you want

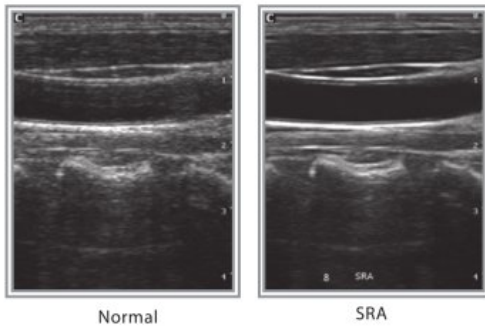
This section highlights the portability of the ECO1 ultrasound machine. It features three circular callouts: 1) A person in blue scrubs carrying a small, white, rectangular carrying case. 2) A close-up of the machine's monitor displaying a B-mode ultrasound image, with a green dot indicating the location of recall clips. 3) A person in blue scrubs pulling a black rolling suitcase, which is the BG-100 carrying case.

## Support PC Printer



## Advanced Technologies

### Speckle Reduction Algorithm(SRA)



SRA is the technique that uses a variety of denoising algorithm to suppress speckle, smooth the tissue images, and make the faint edge more appearing.

## Great image quality



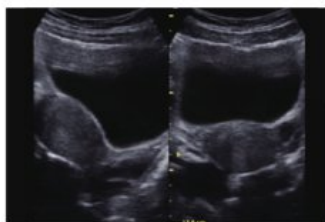
Elbow Joint, B Mode



Fetal Hand, B Mode



Fetal Head, B Mode



Uterus, 2B Mode



Follicle, B Mode



Kidney, B Mode